



COMMISSION SANDBOX 100

v1.0

Contents

WHAT IS SANDBOX 100?	2
WHAT'S IT FOR.....	2
WHO'S IT FOR	2
How Do I Access Commission Sandbox 100?	3
How Do I Access My Commission Code?.....	7
How Do I Access My SQL Database For Commission Sandbox 100?	11
FAQ	13

Commission Sandbox 100

WHAT IS SANDBOX 100?

This new service is already available in the Client Portal (portal.exigo.com). It can be found in the Sandboxes section of the Portal.

WHAT'S IT FOR

The Commission Sandbox is a specialized sandbox configured solely for Commission Engine development. Creating a special sandbox just for commission plan development means you will now have access to:

- Step-through debugging
- Sandbox Database for debugging and testing
- Sandbox Exigo Admin for end-user testing

WHO'S IT FOR

Taking on your own commission plan development is not a trivial task. If you are thinking about using this service we **highly recommend** that you have resources who are:

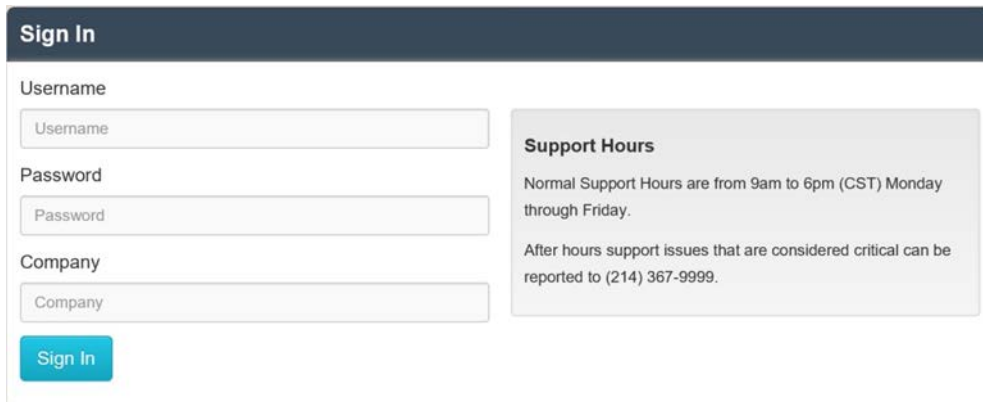
- Experienced C# developers with a strong focus on backend
- And have received full Commission Development Training from the Commissions team here at Exigo*

**If you would like to receive training on Commission Plan development within the Exigo system simply open a ticket (type = Operational Training Request) and we will create a training plan that fits your needs.*

How Do I Access Commission Sandbox 100?

To access your Sandbox 100, you can follow these easy quick steps.

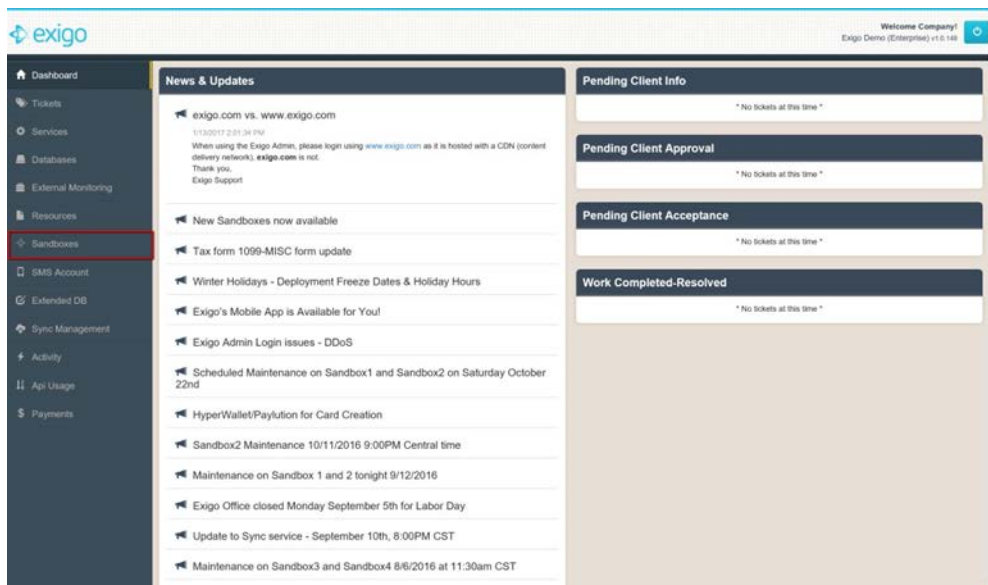
1. Login to your **exigo portal** by going to www.portal.exigo.com.
 - a. You should then see this dialog box:



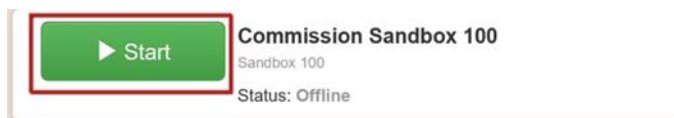
The image shows a 'Sign In' dialog box with the following fields: Username, Password, and Company. A 'Sign In' button is located below the Company field. To the right of the form is a 'Support Hours' section with the text: 'Normal Support Hours are from 9am to 6pm (CST) Monday through Friday. After hours support issues that are considered critical can be reported to (214) 367-9999.'

Enter your credentials and sign in

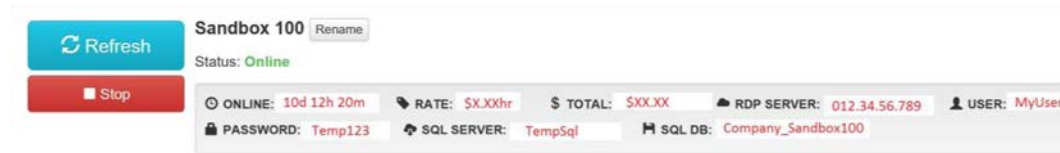
2. Then **Click Sandboxes** located on the left menu



3. Then scroll down to the bottom of your Sandbox list and click Start on your Sandbox 100



4. Once your Sandbox 100 completely initializes, you will then see the following credentials. (If you see the below Screenshot, skip to step 7. If you cannot see the below, go to step 5)



The credentials in red are what will be used to login to your environment

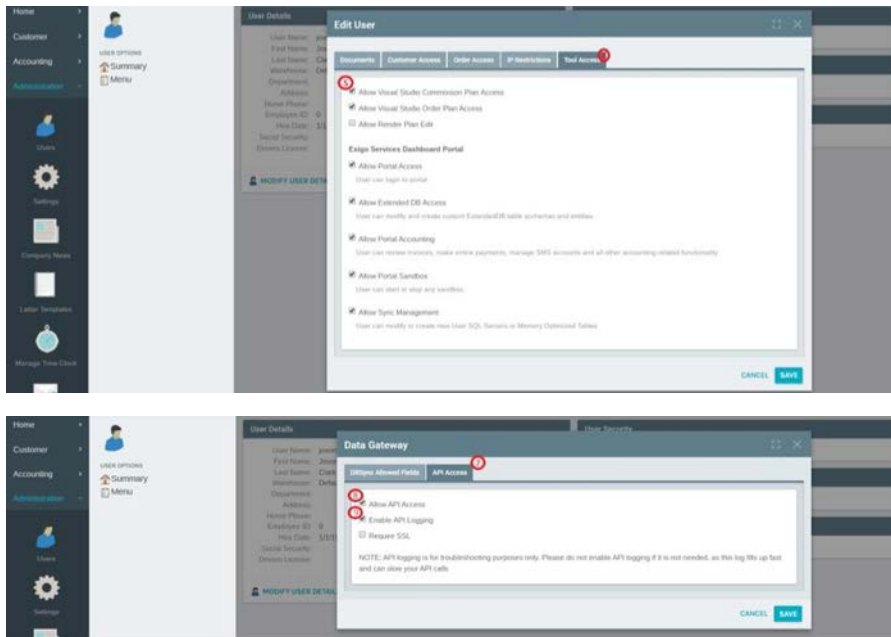
5. If you do not see the credentials above and you only see the following



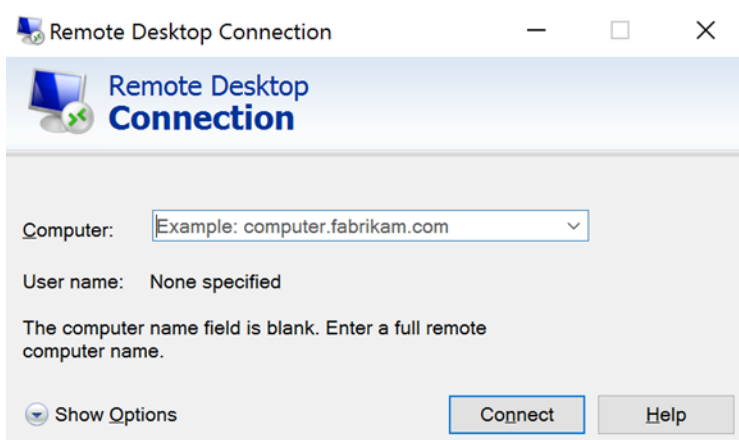
This means your User does not have the "Allow Visual Studio Commission Plan Access" Flag set to True.

6. To set your "Allow Visual Studio Commission Plan Access" Flag set to True, go to www.exigo.com.
 - a. Login to your Company
 - b. Go to Administration
 - c. Choose Users
 - d. Find your User and Double Click or Click Edit
 - e. Navigate to Modify User Security
 - f. Then choose Tool Access
 - g. Lastly, enable Allow Visual Studio Commission Plan Access

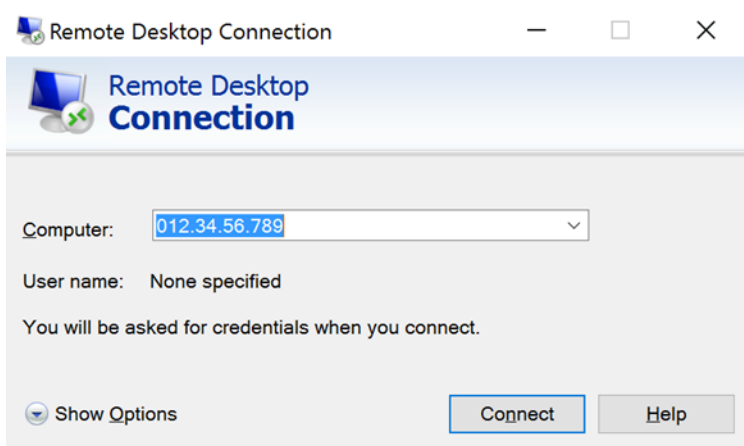




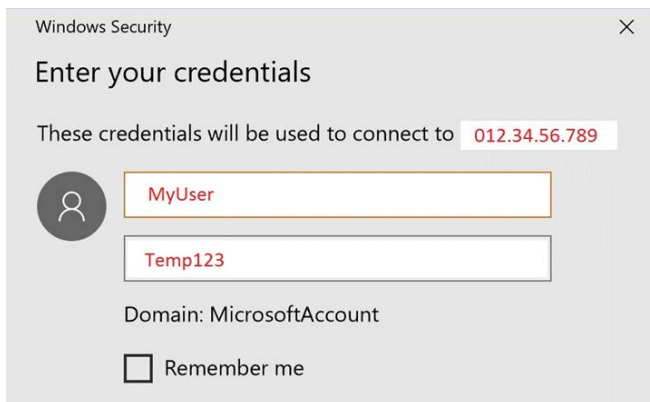
7. Open your preferred program to remote into another computer. In this we will be using Remote Desktop. (If you are using a Windows Operating System, it should already be installed)



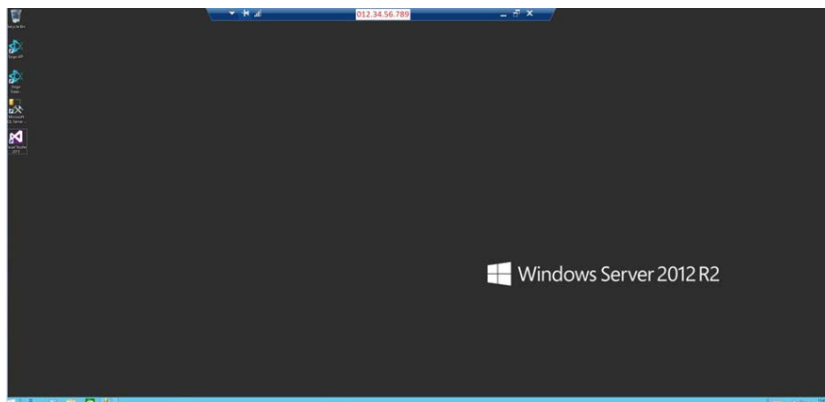
8. In this Dialog Box, you will see the field, "Computer". This is where you will input your RDP Server. (refer to screenshot in step 4) then press Connect



9. After you press connect, the dialog box will now prompt you to insert your login credentials (refer to screenshot in step 4)



10. You should then see the desktop of your environment

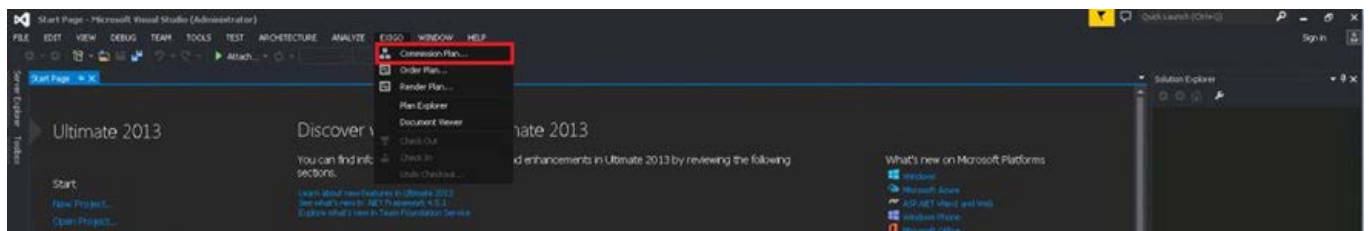


HURRAY! You are now in your Commission Sandbox 100!

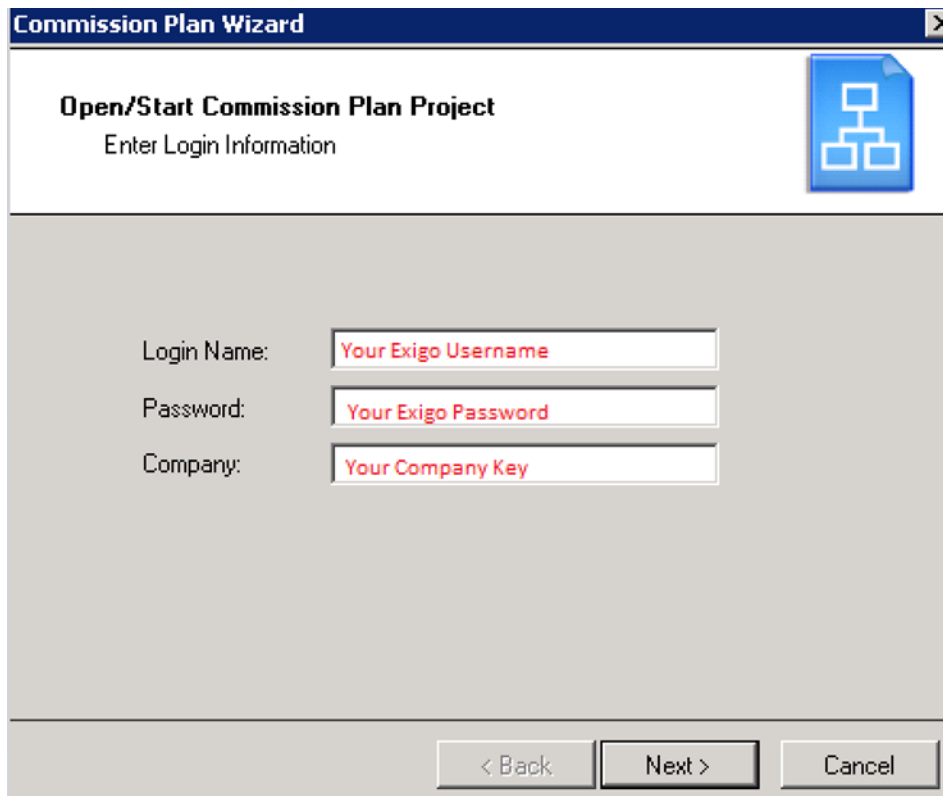
How Do I Access My Commission Code?

To access your Commission Code, you can follow these easy quick steps.

1. Open your Visual Studio Application
2. Navigate to the EXIGO tab and choose the Commission Plan dropdown item



3. Once you click Commission Plan, a new dialog box should pop up and this is where you will enter your Login credentials. These credentials will come from your Exigo Admin Settings (www.exigo.com). You must have "Allow Visual Studio Commission Plan Access" set to true to be able to Login In.



Commission Plan Wizard

Open/Start Commission Plan Project
Enter Login Information

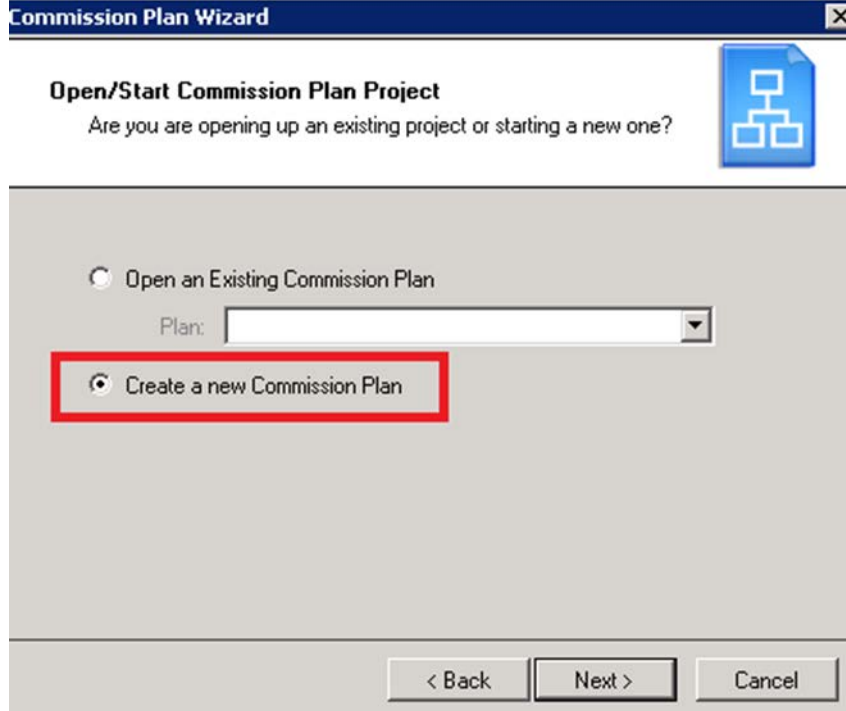
Login Name:

Password:

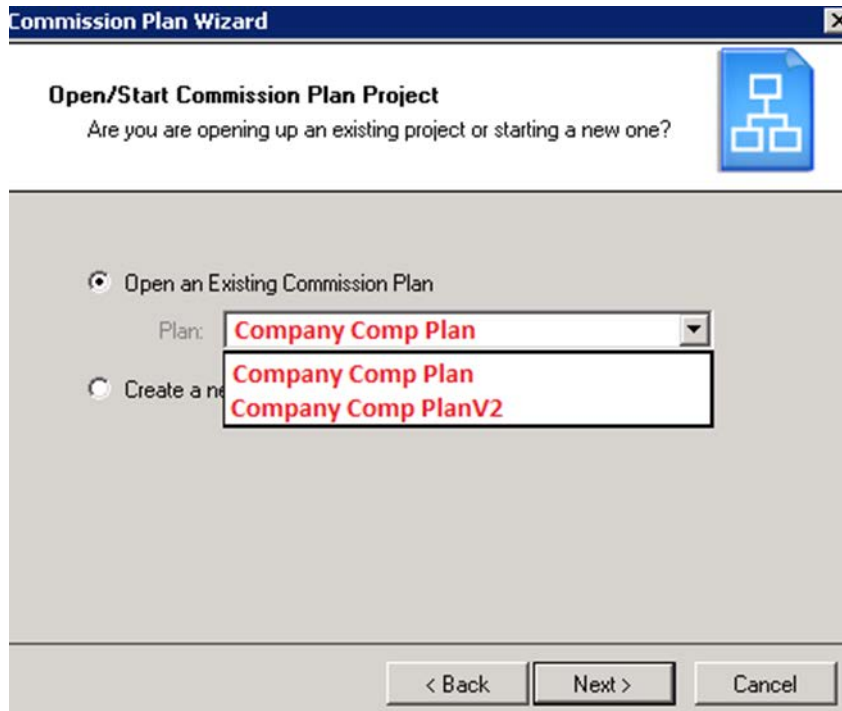
Company:

< Back Next > Cancel

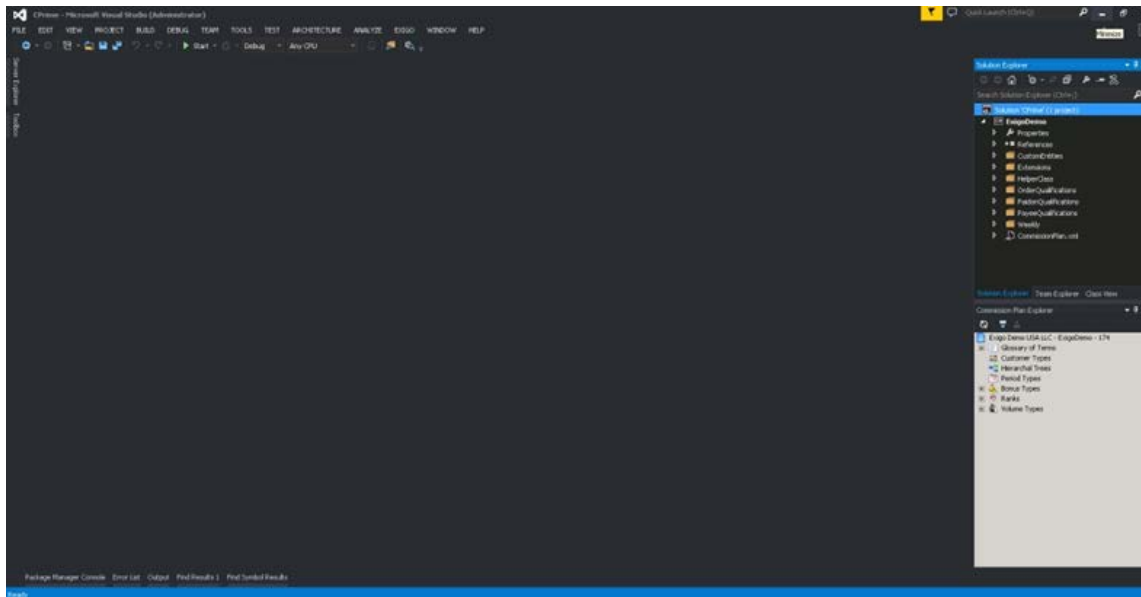
4. To create a new Commission Plan, you will select the following option



5. To make changes to an already existing Commission Plan, you will select the desired Plan Name from the drop down list shown below



6. You should now see your Visual Studio Project

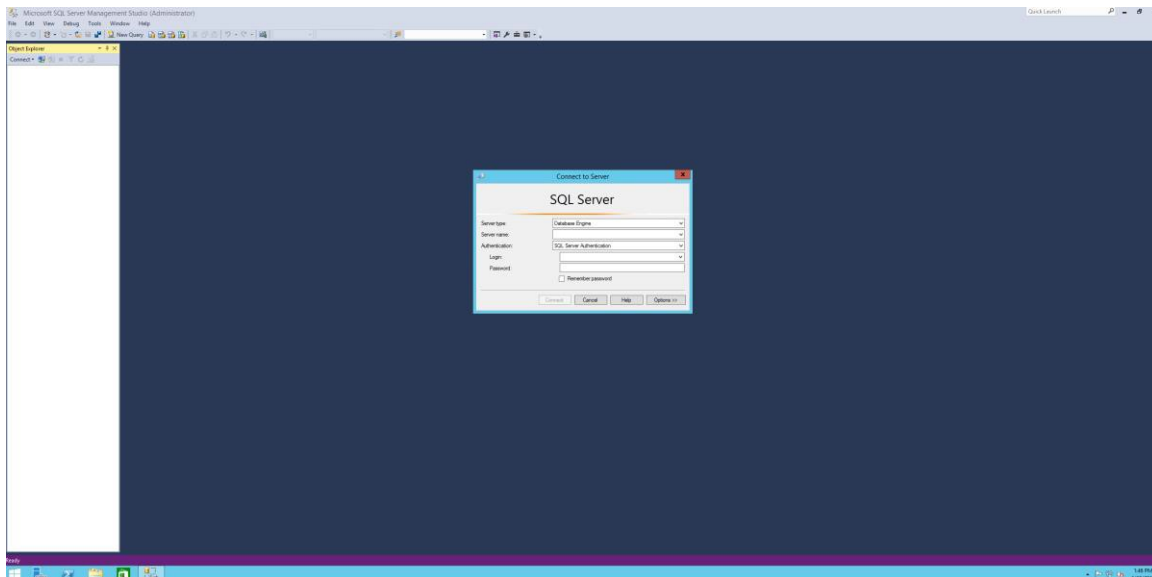


YOU ARE NOW IN YOUR COMMISSION CODE!

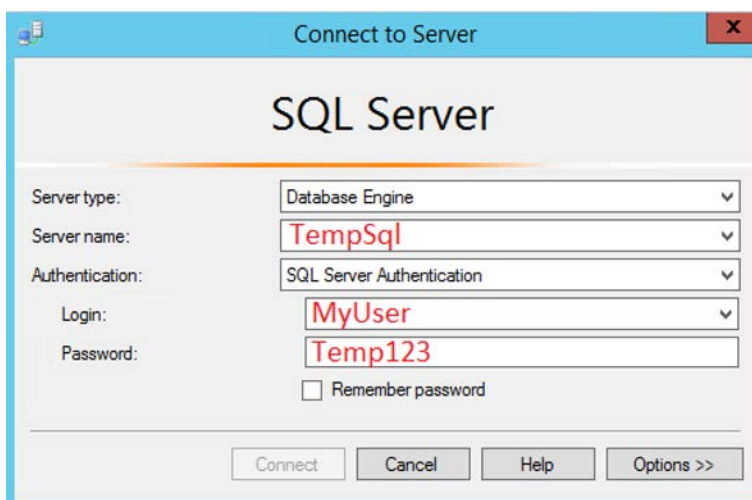
How Do I Access My SQL Database For Commission Sandbox 100?

To access your SQL Database for your Sandbox 100, you can follow these easy quick steps.

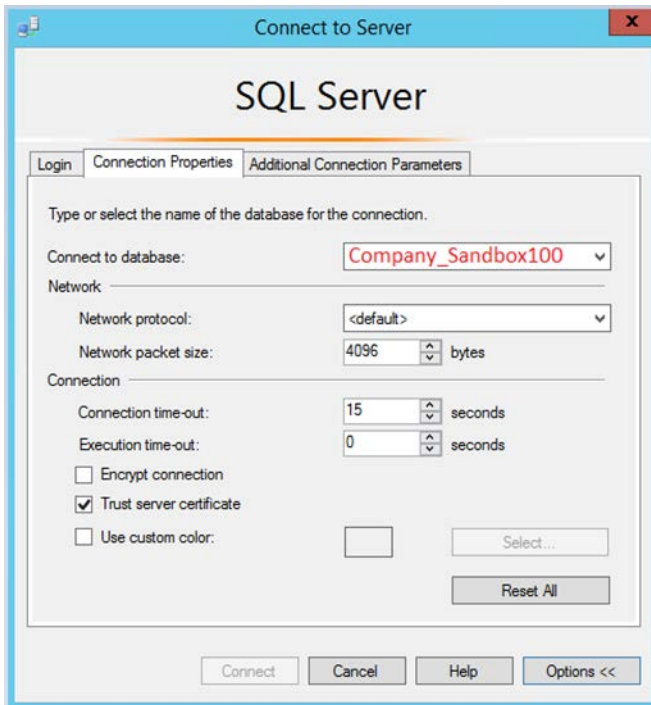
1. Open your SQL Server Application within your Remote Desktop Connection you just made earlier



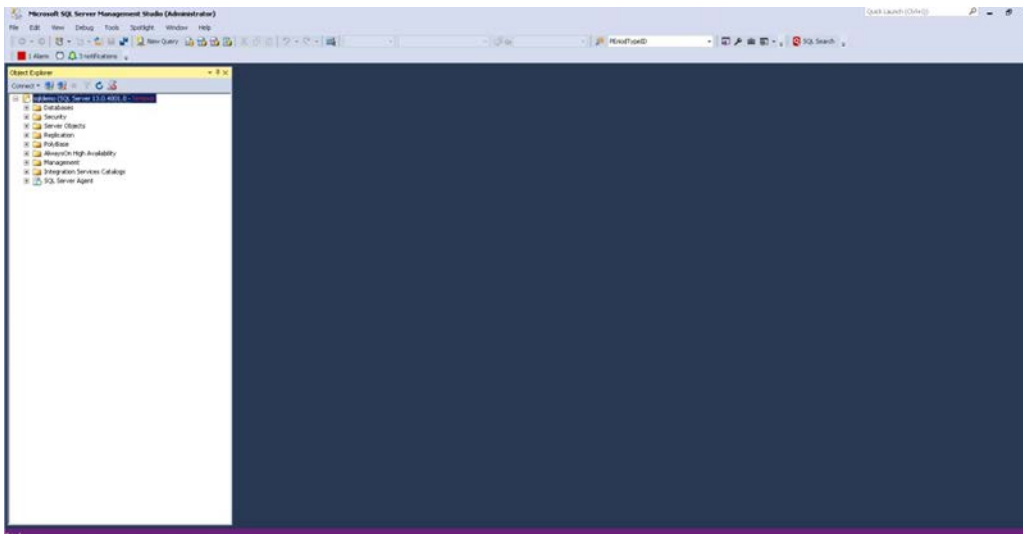
2. Enter your credentials to login to your Sandbox 100 Server



3. Before clicking Connect, click Options >> and insert in the database you want to connect to



4. Now Click Connect
5. You are now connected to your database where you can see in the Object Explorer.



You are now connected to your Commission Sandbox 100 SQL Database!

FAQ

- 1. How is this new sandbox different from the other 8 sandboxes we already have?**
 - a. Primarily, it's the RDP access to a virtual machine that allows you to develop the commission plan directly on the server
 - b. Other than that, it works in much the same way as the other sandboxes:
 - i. You can turn them on or off any time
 - ii. You are only billed for usage when they are on
 - iii. Your bill rate is based on the size of your data
 - iv. When you turn off and then turn back on, or when you refresh the sandbox, it pulls your last backup of your production database, just like the standard sandboxes
- 2. When the code is checked in, does it check into the development area of all platforms still?**
 - a. It checks it into all the sandboxes, including the new commission sandbox
- 3. After I make a change, how do I deploy it?**
 - a. This operates identical to the live system. Log in to <http://sandbox100.exigo.com/> and hit the deploy button in the development area.
- 4. What if I'm logged in and making changes to the code but then someone else logs in to the Sandbox 100?**
 - a. We currently only allow one user connection at a time, therefore, the new user who logs in will be granted the session and will resume the session from where the previous user left off.
 - b. The changes will not be lost, but there will be no notice as to why the original user was logged out.
- 5. What if you are making changes in VS or SQL and then somebody closes the Sandbox 100?**
 - a. If someone hits "Stop" while you are using it, any code you have checked in will be saved, but everything else will be lost.
- 6. I'm assuming all Database changes I make in Sandbox 100 will need to be duplicated into the normal SQL Database, is this correct? (Writing everything in SQL twice?)**
 - a. Yes, this is just like the other sandboxes work today.

As always if you have any questions please don't hesitate to reach out and ask.